



THE UNITED REPUBLIC OF TANZANIA

789012345678901234567890123456789012345678901234567890  
901234567890123456789012345678901234567890123456789012345678901234567890  
78901234567890123456789012345678901234567890123456789012345678901234567890  
1234567890123456789012345678901234567890123456789012345678901234567890

# Measuring Poverty Reduction

Understanding Tanzania's Poverty  
Monitoring System

Poverty Eradication Division  
Vice President's Office

August 2002



# CONTENTS

## *PREFACE*

### *WHAT IS POVERTY AND HOW CAN WE MEASURE IT?*

3

Why do we need a poverty monitoring system?

What is evidence based planning and why is it useful?

### *HOW IS THE SYSTEM DESIGNED?*

5

What is included in the Poverty Monitoring Master Plan?

How is the Poverty Monitoring System managed?

What are Participatory Poverty Assessments (PPAs)?

### *HOW CAN THE SYSTEM BE USED?*

8

Is there a role for regional administrations and local governments?

How can civil society organisations contribute to the system?

How can I feed information into the system?

### *HOW MUCH DOES THE POVERTY MONITORING SYSTEM COST?*

10

Who pays for this?

How will poor people benefit from this system?

### *WHERE CAN I GET MORE INFORMATION ABOUT POVERTY REDUCTION INITIATIVES IN TANZANIA?*

11

Where can I get a copy of the Master Plan?

What are the key outputs from the National Poverty Monitoring System?

## *APPENDICES*

The key elements of the National Poverty Monitoring System

14

Organisational structure of the National Poverty Monitoring System

15

Membership of the four Technical Working Groups

16

List of useful websites

17

Poverty Monitoring Indicators

19

## *ACKNOWLEDGEMENTS*

# PREFACE

The Tanzania Poverty Reduction Strategy Paper (PRSP) provides a medium-term strategy to reduce poverty and is part of the Highly Indebted Poor Countries Initiative (HIPC). This strategy means that the Government has to cut back on spending, but it allows for various poverty-focused activities, and promotes a range of non-financial measures that should make an impact on poverty.

Many people were involved in developing the PRSP, and many more will be involved in making it work. The plan lists the reasons for people being poor, and suggests ways to overcome them. The PRSP is different from other plans because it sets very clear targets, and asks the people of the country to be involved.

There is an urgent need to build the capacity of a wide range of people to monitor the activities that have begun with the PRSP. People also need to help to analyse the information that is gathered, and to figure out what it means for policy.

In order for the Government of Tanzania and other stakeholders to know if the various poverty reduction strategies are having an impact, a Poverty Monitoring Master Plan was developed in December 2001. This laid out a number of initiatives that would be undertaken over the next 3 years that would allow the poverty to be measured.

Following the development of the Poverty Monitoring Master Plan, the Poverty Eradication Division in the Vice-President's Office received a number of enquiries regarding the poverty monitoring system. In an effort to respond to these queries, this guide has been created. Over 20,000 copies (English & Kiswahili) of it will be distributed across Tanzania.

We hope that this will answer those questions asked most frequently of us, and that interested parties will contact us for further information. This booklet is not, by any means, a comprehensive summary of the Poverty Monitoring Master Plan. The intention of the booklet is to present a basic understanding of how the poverty monitoring system works, and to create a demand for information amongst those who would like to participate, in some way, in the poverty monitoring efforts of the country.

---

R. Mollel  
Permanent Secretary

Poverty Eradication Division  
Vice President's Office

August 2002

## WHAT IS POVERTY AND HOW CAN WE MEASURE IT?

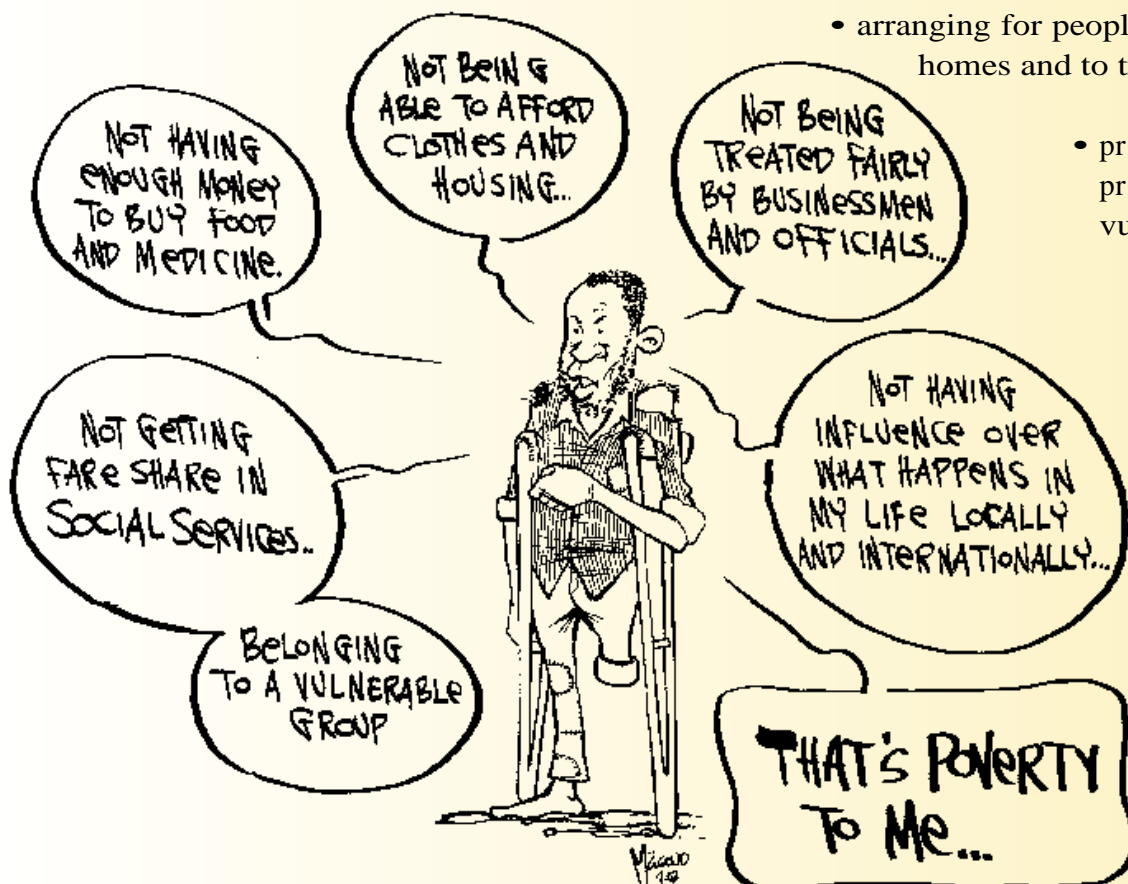
It is not easy to say what poverty is because different people understand it in different ways. It includes amongst other things

- not having a secure source of food and medicine;
- not being able to afford decent clothes and housing;
- not getting a fair share of good quality education and health services and other things like safe water, good roads and reliable public transport;
- not being treated fairly by businessmen and officials (locally, regionally, nationally and internationally);

- not having any influence over what happens in your life (locally, regionally, nationally and internationally);
- being at high risk of becoming poor by belonging to a vulnerable group (eg disabled, orphaned, single parent, elderly, HIV/AIDS victim)

With so many different way of looking at poverty, there are many different ways of trying to reduce it. These include, amongst other things:

- making good use of our natural resources and talents to create wealth and jobs;
- encouraging and supporting the development of effective businesses (small, medium and large);
- making sure that people have access to good quality social services and infrastructure;
- arranging for people to feel secure in their homes and to trust the authorities;
- providing safety net programmes to protect vulnerable people.



### *Why do we need a poverty monitoring system?*

It is not easy to reduce poverty. It involves many different people at different levels in society working on different problems in different places. We need to work together so that we do not waste time, effort and money through lack of communication and getting in each other's way. This means that we need an agreed set of structures and procedures. This means that we need a SYSTEM.

Many people are already gathering valuable information about poverty but they do not always use this information as well as they could. A lot of the work is informal and does not cover national priorities. It is not always based on a good understanding between the people who gather the information, and the people who will eventually use it. This means that there is plenty of room for improvement in how we gather information and how we use it for systematic and evidence-based planning.

No single method of measuring poverty can cope with all these different problems and solutions. We will have to use a range of different methods and somehow pull the results together so that systematic and evidence-based planning becomes possible.

We need a poverty monitoring SYSTEM so that we can plan for and pull together information from a wide range of sources, and analyse it to guide our policies and plans for poverty reduction. Many of these policies and plans will be made at the national level. Through the Local Government Reform Programme (LGRP), more power and responsibility is being given to the regional and local levels to make their own policies and plans for poverty reduction.

The poverty monitoring system will pull together information from three main sources:

- **Routine data** will be collected by local, regional and national government departments (e.g. the 'drop out rate from primary schools' from Education authorities, the 'infant mortality rate' from health authorities; etc);
- **Official investigations** will be carried out by the National Bureau of Statistics (e.g. the National census, Household Budget Surveys, Demographic and Health Surveys, Labour Force Surveys, and Agricultural Surveys );
- **Special studies** will be carried out by a wide range of formal and independent researchers. These studies will *involve* people rather than just use them as sources of information. The results will help to explain the reasons behind changes in the data from the other two sources.

The poverty monitoring system will gather this information and will encourage and assist people and officials at all geographical levels to analyse and distribute it. It will also encourage all the involved individuals to use the information for evidence-based policy making, planning, monitoring and evaluation.

*The Government intends to continue to seek fuller representation of the poor and other stakeholders in the implementation, monitoring and evaluation of the poverty reduction strategy, and in subsequent revisions of the PRSP*

PRSP October 2000

### *What is evidence based planning and why is it useful?*

People make plans based on how they understand the world. How they understand the world depends on what they know i.e. on what evidence they have. If people don't know much and if what they know is wrong, then their understanding and their plans will not be very good.

Gathering evidence in an uncoordinated and unplanned way is better than not gathering it at all, but things will improve when we have a well-designed system and use an integrated approach. Then we can make better decisions, design better policies and use our resources in ways that target the most urgent problems.

Evidence-based policy making encourages Government, and other data users to:

- collect and analyze data, publish the results, and act on them;
- convince people that evidence is useful, and that we should use it when advocating for different and better public policies;
- encourage policy makers and statisticians to work more closely together. It is good when policy makers get involved in designing data collection systems and in analyzing the data, so that information that is collected is useful.

*As a general rule, the most successful man in life is the man who has the best information.*

Benjamin Disraeli  
(1804 - 1881)  
UK Prime Minister

## HOW IS THE SYSTEM DESIGNED?

Many stakeholders were involved in designing the poverty monitoring system. We can therefore be sure that different kinds of useful information will be gathered and analysed in a co-ordinated and efficient way. Survey and research reports will be easy to get a hold of, and they will be presented in ways that all people can understand.

(See Appendix 1 for the key elements of the Poverty Monitoring System).

### *What is included in the Poverty Monitoring Master Plan?*

The Poverty Monitoring Master Plan sets out the work that has to be done over the next three years. It is a rolling plan because each year it draws up a revised three-year plan. The various parts of the plan have been costed, and its overall activities have been built into the government budget. The plan includes capacity building measures for each part of the system. This is to make sure that there are enough people with the knowledge, skills and equipment needed to carry out the plan.

### *How is the Poverty Monitoring System managed?*

At a stakeholder workshop in October 2000, participants agreed that there should be a national poverty monitoring steering committee with representatives from all relevant parts of government, civil society, academia and the private sector. The workshop also suggested that there was a need for four smaller **Technical Working Groups (TWG)**. These have now been set up.

(See Appendix 2 for a drawing which shows how the system works).

A **Poverty Monitoring Steering Committee** was set up in May 2001. It is chaired by the Permanent Secretary in the Vice President's Office. It is a broad-based committee with members from academic institutions, civil society, faith based groups, international development partners, key ministries involved in the PRSP, and the private sector

The main tasks of the Steering Committee are to watch over the poverty monitoring process and to provide guidelines to, review reports from, and approve the annual work plans of the four Technical Working Groups. The Steering Committee also finds the funds to put the Poverty Monitoring Master Plan into practice, and it guides the preparation of the annual report on the poverty situation in Tanzania.

The **Poverty Reduction Strategy (PRS) Technical Committee** is chaired by the Deputy Permanent Secretary in the Ministry of Finance. It includes representatives from the four Technical Working Groups. Its task is to co-ordinate and develop ideas from the Technical Working Groups before they are presented to the Steering Committee.

The **Poverty Monitoring Secretariat** has members from the Vice-President's Office, the Ministry of Finance, and the President's Office, Planning and Privatisation. The secretariat works not only for the Poverty Monitoring Steering Committee and the PRS Technical Committee but also for the Committee of Ministers

The tasks of the Secretariat include organising meetings of the committees which it supports; telling technical working groups about decisions taken by committees; preparing cabinet papers; and coordinating the production of technical papers for the committees. The Secretariat also co-ordinates stakeholder consultation processes for the Poverty Reduction Strategy (PRS), prepares the annual report on the poverty situation in Tanzania.

The four **Technical Working Groups (TWG)** are:

- **Surveys and Censuses TWG**  
This group is chaired by the National Bureau of Statistics. It has designed a survey programme covering work until 2012. At appropriate intervals, this work includes the National Census, Household Budget Surveys (HBS), Demographic and Health Surveys (DHS), Labour Force Surveys (LFS) and Agricultural Surveys
- **Routine Data Systems TWG**  
This group is chaired by the President's Office, Regional Administration and Local Government. It helps to improve the systems which central, regional and local government offices use to analyse, exchange and distribute information. The improved systems will let a wider range of people have easier access to more relevant and useful information.
- **Research and Analysis TWG**  
This group is chaired by the President's Office, Planning and Privatisation. It sets priorities and suggests funding mechanisms for research and analysis. It provides analysis to broaden understanding about the amount and causes of poverty in the country, and about the impact of poverty reduction policies. A range of research methods will be used, although Participatory Poverty Assessments (PPA) are highlighted because they capture how poor people themselves understand their situations.
- **Dissemination, Sensitization and Advocacy TWG**  
This group is chaired by the Vice President's Office. It coordinates a programme for distributing the information that comes from poverty monitoring, and it also raises awareness about trends in poverty amongst all relevant stakeholders. Amongst other things, it is committed to getting user-friendly information to people at grass roots level so that they are able to take local action.

The Technical Working Groups co-ordinate and guide the work that is going on in their fields, rather than actually doing it. Obviously, if the groups became too big, they would be difficult to manage. They have therefore been set up with a small, but well-balanced membership which include gender and environmental ‘champions’.

This means that if you are, for example, a Civil Society Organisation (CSO) with particular ideas to feed in, you could do so through the CSO representative. If you feel you have a strong case for joining one of the TWGs, you can approach the Chair of the relevant group through the Poverty Monitoring Secretariat.

Details about the membership of the four TWGs are given in Appendix 3.

### ***What are Participatory Poverty Assessments (PPAs)?***

A lot of the data which is collected in the Poverty Monitoring System is based on hard facts and numbers i.e. *quantitative evidence*. This can tell us a lot about **what** is happening but not always about **why** it is happening. The people who are affected are the best ones to answer the **why** questions. They know what they feel and how they understand the situations in which they live. When this kind of information is gathered, it represents *qualitative evidence*.

Participatory poverty assessments allow poor people and individuals from various vulnerable groups to say what they think and feel about poverty. They can also give their opinions about the causes for the changes that are happening around them. PPA researchers try to talk with individuals rather than with organisations. The PPA process is participatory and allows vulnerable people to report on how policies and plans have, or have not, made a difference in their lives.



## HOW CAN THE SYSTEM BE USED?

The Poverty Monitoring System is different because:

- the people who will use the information have been involved in deciding what information to collect;
- policy makers, planners and development partners at all levels are now more aware of the need for an evidence based approach;
- the Dissemination, Sensitization and Advocacy Technical Working Group has been created to make sure that information is widely available, and is presented in a way that is easy for different stakeholders to understand;

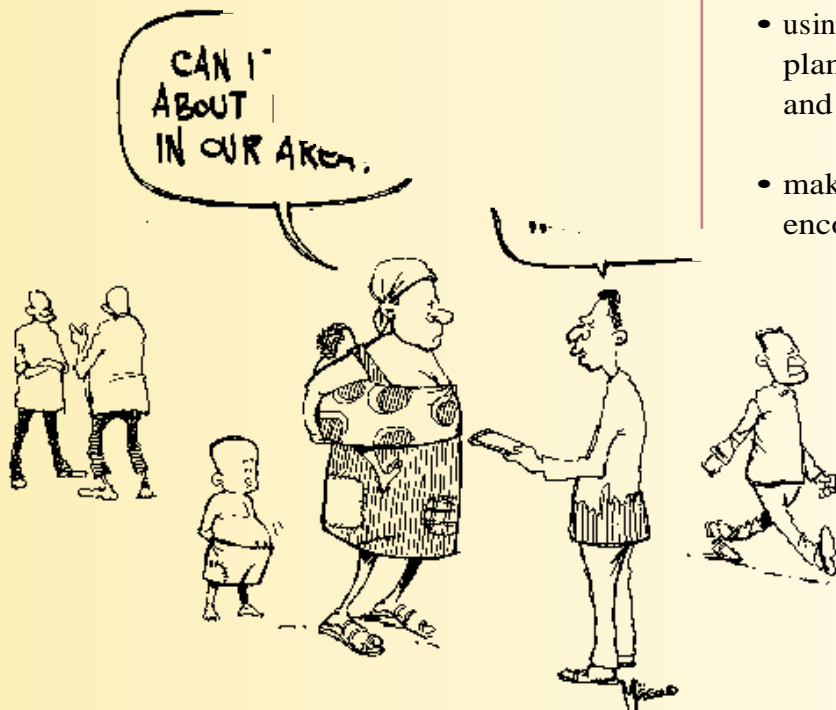
- the system of gathering, analysing and disseminating information is constantly under review by a wide range of stakeholders so it can be changed if it is not working.

The Poverty Monitoring System is designed to include as many stakeholders as possible. In the struggle against poverty, the system will help to make the best use of the time and effort of all those who are involved. People can use the system in two main ways – they can feed information in and they can draw information out.

### *Is there a role for regional administrations and local governments?*

People in regional administrations and local government will be closely involved with the Poverty Monitoring System by:

- helping to gather and analyse evidence at the local, regional and national levels;
- using the evidence for policy making, planning, monitoring and evaluation at local and regional levels;
- making the results widely available and encouraging people to discuss and use them.



People in regional administrations and local government will be particularly important for the work of the Routine Data Systems Technical Working Group (TWG). The other TWGs need routine data to round off information that would otherwise have large gaps in terms of both time and geographical coverage. Local information can be used locally, but policy makers at the national level also need local information to match the different needs of different people in different parts of the country.

The Poverty Monitoring System will also be closely linked to the Local Government Monitoring and Evaluation (LG M&E) system. This is being introduced as part of the Local Government Reform Programme (LGRP). The two systems include providing people with equipment and training. This will make a big difference in helping individuals in local authorities and regional administrations to become more effective in collecting, processing, analysing and using routine data.

***How can civil society organisations contribute to the system?***

Civil society organisations have been involved at all stages in the development of the Poverty Monitoring System, and have representatives on the Poverty Monitoring Steering Committee and on the Technical Working Groups (TWG).

Civil society organisations will be particularly important in implementing the Participatory Poverty Assessments of the Research and Analysis TWG and in the outreach work of the Dissemination, Sensitization and Advocacy TWG.

The Poverty Monitoring System tries to be as inclusive as possible, and independent monitoring and analysis by civil society organizations is seen as valuable. The system as a whole is able and willing to encourage independent investigations, and to absorb and help distribute the findings.

The Research and Analysis TWG regularly develops and revises a programme of research priorities. Some funds are available to support poverty monitoring work carried out by civil society organisations where this falls within the TWG's priorities.

NOTE: The Poverty Monitoring System funds can only be used to support poverty reduction projects which are research-based.

***How can I feed information into the system?***

In an informal way, poverty monitoring is happening all the time. All people, whether rich or poor, old or young, rural or urban, as individuals or in groups, take action based on the evidence that is available to them. The Poverty Monitoring System will help all kinds of people to find the evidence they need to make

I HAVE SOME EVIDENCE ON POVERTY IN TANZANIA WHICH I WOULD LIKE TO FEED INTO THE POVERTY MONITORING SYSTEM, HOW DO I DO THIS?



better decisions. The more information that is available through the Poverty Monitoring System, the more effective it will be.

Tanzania needs evidence on how poverty is changing, and on how the government's efforts to reduce poverty are making an impact – or not. The Poverty Monitoring System has been designed to make the best use of the time and efforts of all those involved in the exercise.

It follows that evidence produced independently by individual people or by institutions will be welcomed by the Poverty Monitoring System. You should send your evidence to the Poverty Monitoring Secretariat in the Vice President's Office whose contact details are listed on the back cover of this booklet. The Secretariat will then pass it on to the most appropriate Technical Working Group.

## HOW MUCH DOES THE POVERTY MONITORING SYSTEM COST?

The Poverty Monitoring System will cost about 2.5 billion TZ shillings a year. This may seem like a large amount of money but it is only about 0.6% of the 516 billion TZ shillings that has been budgeted for the Poverty Reduction Strategy as a whole in 2002/03.

If the Poverty Monitoring System did not exist, data collection would be unplanned and uncoordinated and a lot of time, effort and funds would be wasted. This new, better organised system means that we will be getting value for money spent.

Detailed budgets have been prepared for each of the four Technical Working Groups, and for the overall administration of the system. You can read about these in the Poverty Monitoring Master Plan.

## *Who pays for this?*

The government has made poverty monitoring an essential part of what it does. It has devoted 1.1 billion TZ shillings in the budget for 2002/2003. The shortfall of 1.4 billion TZ shillings will be covered by development partners.

## *How will poor people benefit from this system?*

Poor people will not benefit directly from the money spent on the Poverty Monitoring System, but they will get enormous indirect benefits because of improvements in evidence-based policy making, planning, monitoring and evaluation at local, regional and national levels.

Amongst other things, the system will allow people at the local level to know about the policies and funds that are supposed to affect them. If things do not go according to the plan and the timetable, they will be in a good position to ask why.

*We need outside help for analyzing and for a better understanding of our situation and experience, but not for telling us what we should do.*

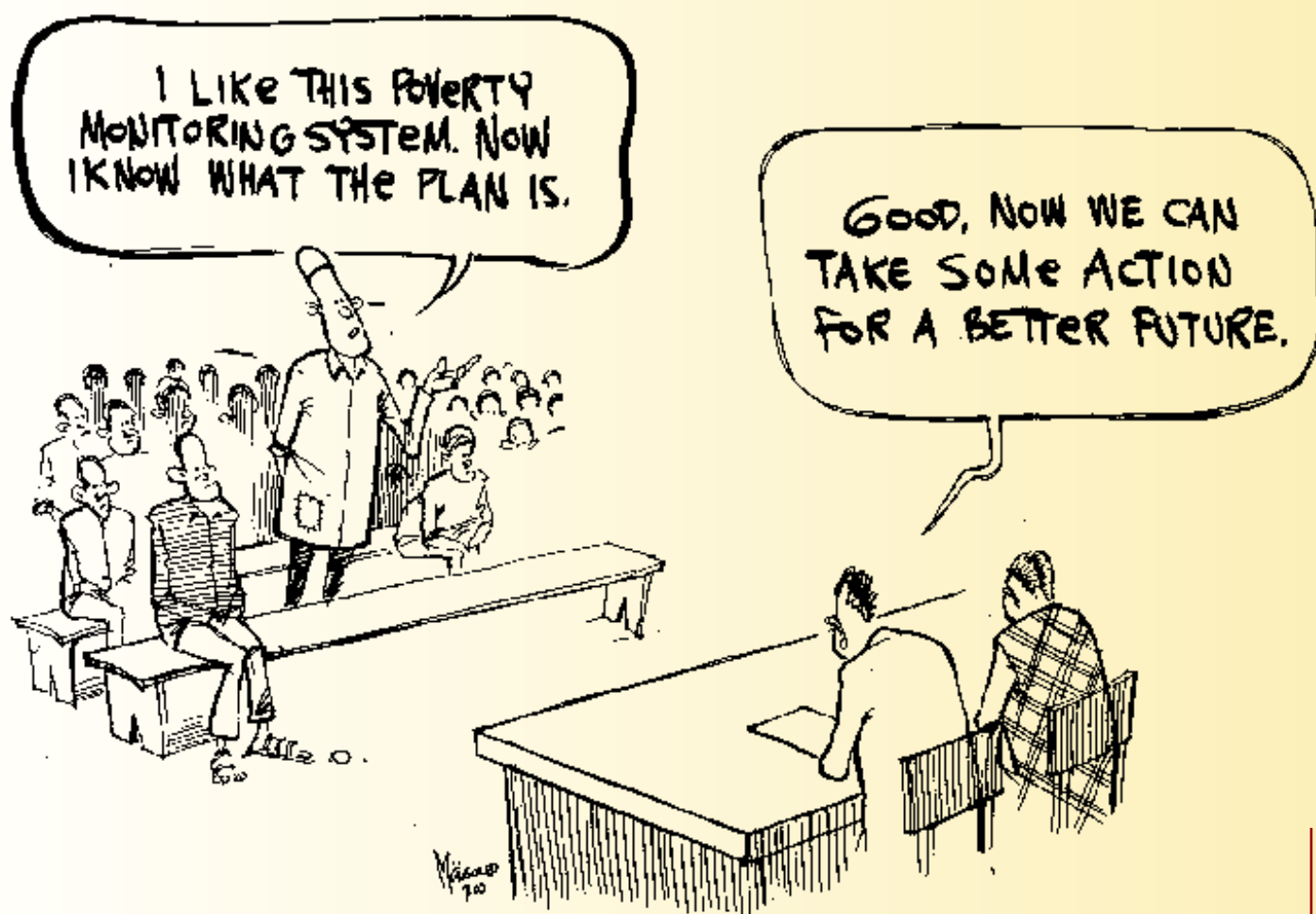
Bhoomi Sena Movement  
(India)  
1977

## WHERE CAN I GET MORE INFORMATION ABOUT POVERTY REDUCTION INITIATIVES IN TANZANIA?

The Poverty Monitoring System has been built to make it easy to find information. A range of different reports will be produced over the next few years. These will be available as booklets and reports which you can refer to in your regional and district government offices. You can also get copies for yourself from the Poverty Monitoring Secretariat (contact details on the back cover). Most of the information and reports will also be available online from a range of web sites (see Appendix 5 for a list of useful websites).

Note that a lot of information will also be distributed through newspapers, radio and television and also sometimes through posters and creative theatrical productions. Watch out for what is happening at local, regional and national levels and be ready to take part.

You can also put your name on a mailing list so that information about new reports can be sent to you when they are produced. Write to the address given on the back of this booklet if you want to receive more information.

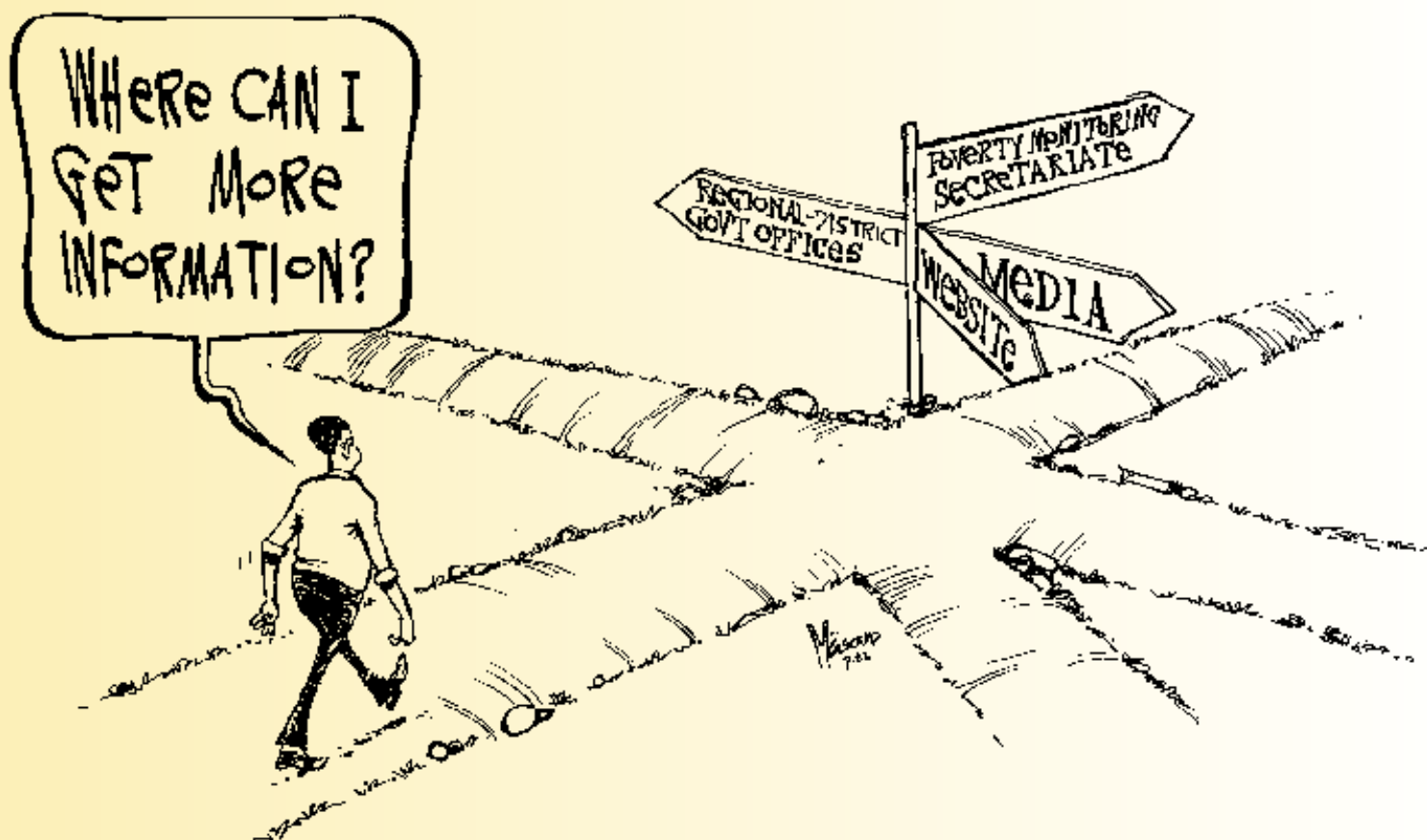


***Where can I get a copy of the Master Plan?***

The Poverty Monitoring Master Plan is available for reference at regional and district Government offices. They have a bright red cover.

If you want your own copy, then write to the Poverty Monitoring Secretariat, whose contact details are on the back cover of this booklet.

If you are connected to the internet you can download your own free copy of the plan from <http://www.tzonline.org/pdf/povertymonitoringmasterplan.pdf>



## *What are the key outputs from the national poverty monitoring system?*

---

You can expect the following reports to be available:

1. **Household Budget Survey 2000/2001**

This report will provide quantitative results from household surveys, and make comparisons with similar surveys undertaken in 1990/1991.

2. **Poverty and Human Development Report**

This report will give an overview of progress towards the PRSP targets. It will also present key findings from research and analysis. These will explain the causes behind the changes shown by the quantitative data.

3. **Integrated Labour Force Survey**

This survey will provide key findings on the status of the labour force in Tanzania, including a section on child labour.

4. **Participatory Poverty Assessments**

These assessments will provide insights into the real issues of vulnerability that people are faced with.

5. **Updates to TSED** (Tanzania Socio-Economic Database)

This is a computer-based, central source of statistical information held in the National Bureau of Statistics. All stakeholders are encouraged to use it.

6. **Policy Briefings:**

These are special reports using evidence from the monitoring system to analyse and review particular issues.

## APPENDIX I

### *The key elements of the national Poverty Monitoring System*

#### ***Definition of information needs:***

Stakeholders have agreed on a core set of indicators, as well as on the priorities for gathering qualitative information to flesh out the bare statistics.

#### ***Institutional framework:***

A national poverty monitoring steering committee and four technical working groups have been created to steer and implement the work of the system. The full institutional framework is described in Appendix 2.

#### ***Data collection instruments:***

There are two main groups of data collection instruments. The Surveys and Censuses Technical Working Group oversees a multi-year survey programme of the National Bureau of Statistics. The Routine Data Systems Technical Working Group is helping to make plans to improve how national and local government departments analyse and use the everyday information that they collect.

#### ***Research priorities:***

Research questions will guide people in collecting the kind of information that is not gathered by surveys, the census, and routine data sources. This information will address qualitative information needs and evaluation issues. The Research and Analysis Technical Working Group has drawn up a programme to guide a set of focused studies, analyses and participatory poverty assessments.

#### ***Dissemination plan:***

The Dissemination, Sensitization and Advocacy Technical Working Group has made a list of the main people who will use the data and information produced by the poverty monitoring system. It has also thought about the best ways of making the information available to those people. Important channels include the Tanzania Socio-Economic Database (TSED) and Tanzania Online.

#### ***Capacity building:***

Plans have been made to make sure that the key people involved in poverty monitoring get the training and facilities they will need to be efficient and effective.

#### ***Costings:***

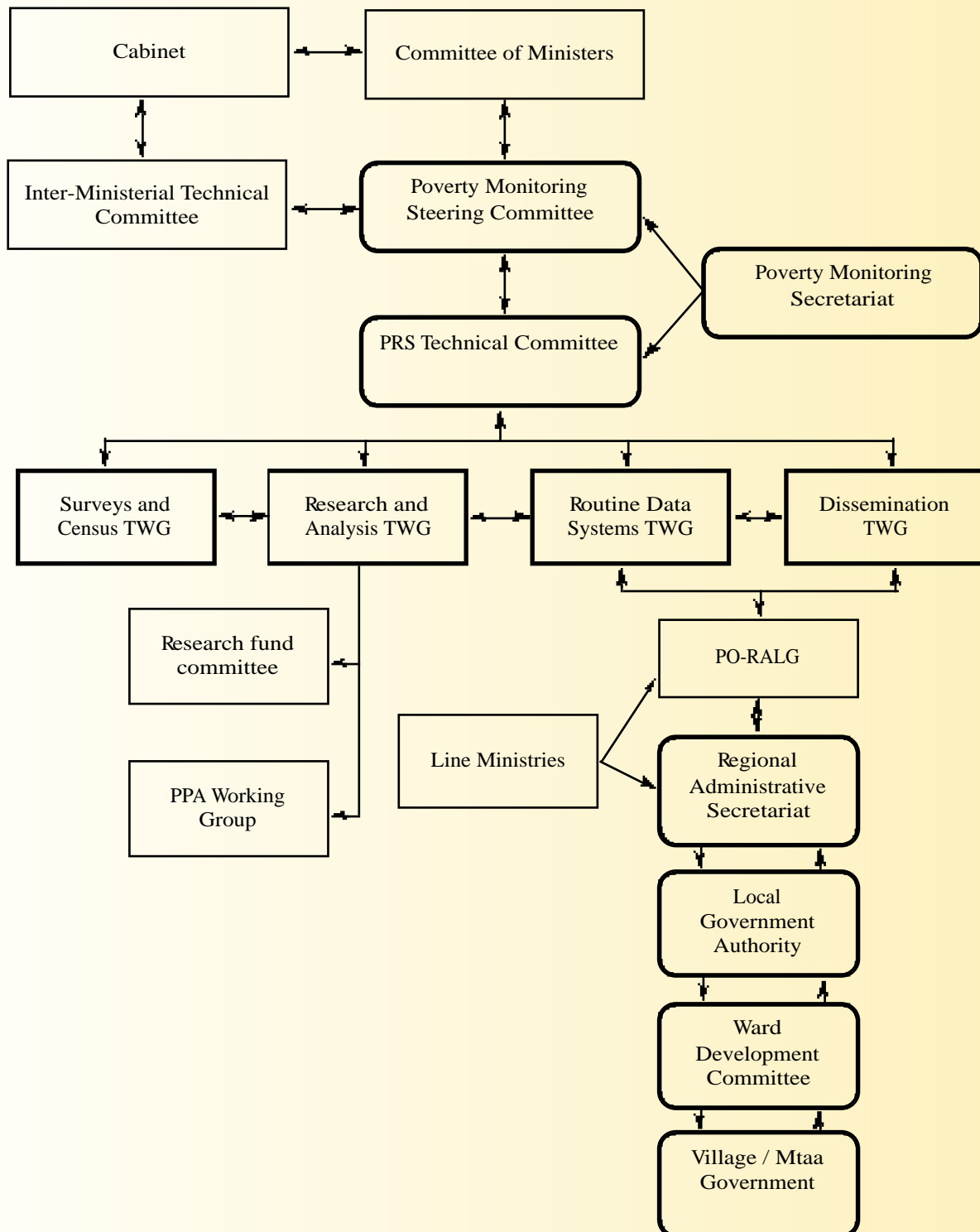
Detailed budgets have been made for each part of the National Poverty Monitoring System and these have been pulled together into a three-year master budget.

#### ***A joint funding mechanism:***

The costs of the system will be met partly by government and partly by development partners.

## APPENDIX 2

### Organisational Structure of the National Poverty Monitoring System



## APPENDIX 3

### Membership of the Technical Working Groups (TWG)

#### Surveys and Censuses TWG

*Chair:* Director-General, National Bureau of Statistics.

*Members:*

- Bank of Tanzania
- Department for International Development (DFID)
- East African Statistical Training Centre
- International Labor Organization (ILO)
- JICA
- National Bureau of Statistics
- President's Office, Planning & Privatization
- UCLAS
- United Nations Development Program (UNDP)
- United Nations Fund for Population Activities (UNFPA)
- United Nations Children's Fund (UNICEF)
- University of Dar es Salaam
- World Food Program

#### Routine Data Systems TWG

*Chair:* Director of Regional Administration, President's Office, Regional Administration and Local Government.

*Members:*

- East African Statistical Training Centre
- Irish Aid
- Local Government Reform Program
- Ministry of Agriculture & Food Security
- Ministry of Education & Culture
- Ministry of Health
- Ministry of Regional Admin & Local Government
- Ministry of Water & Livestock
- Ministry of Works
- President's Office, Regional Admin & Local Government
- Swiss Development Corporation (SDC)
- UNDP
- UNICEF

#### Research and Analysis TWG

*Chair:* Director for Macroeconomy, President's Office, Planning and Privatization

*Members:*

- Bank of Tanzania
- DFID
- Economic & Social Research Foundation (ESRF)
- JICA
- National Bureau of Statistics
- Netherlands Embassy
- President's Office, Planning & Privatization
- Poverty Eradication Division, VPO
- Research on Poverty Alleviation (REPOA)
- UNDP
- UNICEF
- University of DSM
- World Bank

#### Dissemination, Sensitization & Advocacy TWG

*Chair:* Director of Poverty Eradication, Vice President's Office

*Members:*

- CARE International
- DFID
- HakiKazi Catalyst
- HealthScope
- International Data Vision
- Irish Aid
- JICA
- Local Government Reform Programme
- Ministry of Education
- Ministry of Finance
- Ministry of Health
- National Bureau of Statistics
- National Environmental Council
- Poverty Eradication Division, VPO
- President's Office, Planning & Privatization
- Save the Children
- Tanzania Gender Network Program
- Tanzania Social Action Fund
- UNDP
- UNICEF
- WaterAid

## APPENDIX 4

*Websites with a lot of information about poverty in Tanzania include:*

### **Tanzania Online**

[www.tzonline.org](http://www.tzonline.org)

*Links and information on development issues.*

### **CIA Fact book on Tanzania**

[www.cia.gov/cia/publications/factbook/geos/tz.html](http://www.cia.gov/cia/publications/factbook/geos/tz.html)

### **ESRF**

[www.esrftz.org](http://www.esrftz.org)

*ESRF, Economic and Social Research Foundation, Research Institution, NGO in Tanzania. Non-governmental research institute for capacity building in economic and social policy analysis ...*

### **Tanzania at the World Bank site**

[www.worldbank.org/hipc/country-cases/tanzania/tanzania.html](http://www.worldbank.org/hipc/country-cases/tanzania/tanzania.html)

*The World Bank Group offers loans, advice and an array of customized resources to more than 100 developing countries. It is also known as the International Bank for Reconstruction and Development. Policies, products, economic ...*

### **Tanzania Gender Networking Programme**

[www.tgnp.co.tz](http://www.tgnp.co.tz)

*...Working towards achieving Gender Equality and Equity; Social Transformation and Women's Empowerment. Includes current activities, educational programs, publications, funding information, and contact details.*

### **Hakikazi Catalyst**

[www.hakikazi.org](http://www.hakikazi.org)

*Exchanging ideas on how to promote the rights of all people to fully participate on social, technical ...*

### **TANGO**

[www.tango.or.tz](http://www.tango.or.tz)

*Includes a directory of non-governmental organizations (NGOs), organization programs, publications ...*

### **Tanzania at the IMF site**

[www.imf.org/external/country/tza/index.htm](http://www.imf.org/external/country/tza/index.htm)

*IMF Home page with links to News, About the IMF, Fund Rates, IMF Publications, What's New, Standards and Codes, Country Information and featured topics. Fosters economic growth through international monetary cooperation and temporary financial assistance.*

### **REPOA**

[www.repoa.or.tz](http://www.repoa.or.tz)

*Non-governmental organization, includes research agenda and activities, policy briefs and news.*

### **Tanzania PPA**

[www.esrftz.org/ppa/](http://www.esrftz.org/ppa/)

*This has a calendar of poverty related meetings and events. Economic and Social Research Foundation, Research Institution, NGO in Tanzania. Non-governmental research institute for capacity building in economic and social policy analysis ...*

*Some of the main documents and reports which already exist include the following:*

---

- **The Tanzania Development Vision 2025**  
[www.tzonline.org/pdf/theTanzaniadevelopmentvision.pdf](http://www.tzonline.org/pdf/theTanzaniadevelopmentvision.pdf)
- **The National Poverty Eradication Strategy (NPES)**  
[www.tanzania.go.tz/poverty.html](http://www.tanzania.go.tz/poverty.html)
- **The Tanzania Assistance Strategy (TAS)**  
[www.tzdar.or.tz/Harmonisation/TAS.doc](http://www.tzdar.or.tz/Harmonisation/TAS.doc)
- **The URT Poverty Reduction Strategy Paper (PRSP)**  
[www.tzonline.org/pdf/FinalPRSP25.pdf](http://www.tzonline.org/pdf/FinalPRSP25.pdf)
- **Tanzania without Poverty**  
[www.hakikazi.org/eng](http://www.hakikazi.org/eng)
- **The URT Poverty Reduction Strategy Paper Progress Report 2000/01**  
[www.tzonline.org/pdf/prspprogress01.pdf](http://www.tzonline.org/pdf/prspprogress01.pdf)
- **Poverty Monitoring Master Plan**  
[www.tzonline.org/pdf/povertymonitoringmasterplan.pdf](http://www.tzonline.org/pdf/povertymonitoringmasterplan.pdf)
- **First Progress Report on Tanzania without Poverty**  
[www.hakikazi.org/eng2](http://www.hakikazi.org/eng2)

## APPENDIX 5

### *Poverty Monitoring Indicators*

#### *Income poverty*

Headcount ratio – basic needs poverty line  
Headcount ratio – basic needs poverty line (rural)  
Headcount ratio – food poverty line  
Asset ownership (as proxy for income poverty)  
Proportion of working age population not currently employed  
Overall GDP growth per annum  
GDP growth of agriculture per annum  
Percentage of rural roads in maintainable condition (good and fair condition)

#### *Human capabilities*

Girl/boy ratio in primary education  
Girl/boy ratio in secondary education  
Transition rate from primary to secondary  
Literacy rate of population aged 15+  
Net primary enrollment  
Gross primary enrollment  
Drop-out rate in primary school  
Percent of students passing Std 7 with grade A,B,C  
Prevalence of ARI in under-fives  
Prevalence of diarrhea in under-fives  
Population with access to safe water

#### *Survival*

Infant mortality rate  
Under-five mortality rate  
Life expectancy  
Seropositive rate in pregnant women  
Districts covered by active HIV/AIDS awareness campaign  
Maternal mortality rate  
Malaria in-patient case fatalities for children under 5  
Children under 2 years immunized against both measles and DPT  
Births attended by a skilled health worker

#### *Social wellbeing (governance)*

Ratio of primary court filed cases decided  
Average time taken to settle commercial disputes

#### *Nutrition*

Stunting (height for age) of under fives  
Wasting (weight for height) of under fives  
Underweight (weight for age) of under fives

#### *Extreme vulnerability*

Proportion of orphaned children  
Proportion of child-headed households  
Proportion of children in the labour force  
Proportion of children in the labour force and not going to school  
Proportion of elderly living in a household where no one is economically active

#### *Conducive development environment*

Ratio of reserves to monthly inputs

*Men on their side must force themselves for a while to lay their notions by and begin to familiarize themselves with facts.*

Francis Bacon  
(1561-1626)  
UK Scientist

# ACKNOWLEDGEMENTS

The Poverty Eradication Division of the Vice-President's Office is grateful to the following for their contributions towards the creation and distribution of this booklet:

- Members of all the Technical Working Groups, specifically the Dissemination, Sensitization and Advocacy Technical Working Group
- Arthur Van Diesen and Christopher Mushi of UNDP
- Alana Albee and Kaushi Shah of DFID
- Esther Obdam of UNICEF
- Staff of the Poverty Eradication Division, specifically Anna Mwashu, Paschal Assey and Servus Sagday
- George Clark of the Caledonia Centre for Social Development
- Emmanuel Kallonga of HakiKazi Catalyst
- Nisha Sanghvi of Acex Systems Ltd
- Masood Kipanya
- ColorPrint Tanzania Ltd
- Waheeda Samji and Julia Sampson of Carpe Diem Ink
- All others who may have contributed in some way to this publication

---

**Dr. S. Likwelile**

Chairman

Dissemination, Sensitization and Advocacy Technical Working Group



567890123456789012345678901234567890123456789012345678901234567890  
78901234567890123456789012345678901234567890123456789012345678901234567890  
678901234567890123456789012345678901234567890123456789012345678901234567890  
1234567890123456789012345678901234567890123456789012345678901234567890

MEASURING  
POVERTY  
REDUCING

**For more Information  
Please contact:**

Poverty Monitoring Secretariat  
Poverty Eradication Division  
Vice President's Office  
2nd Floor, Maktaba Complex  
PO Box 5380  
Dar-es-Salaam